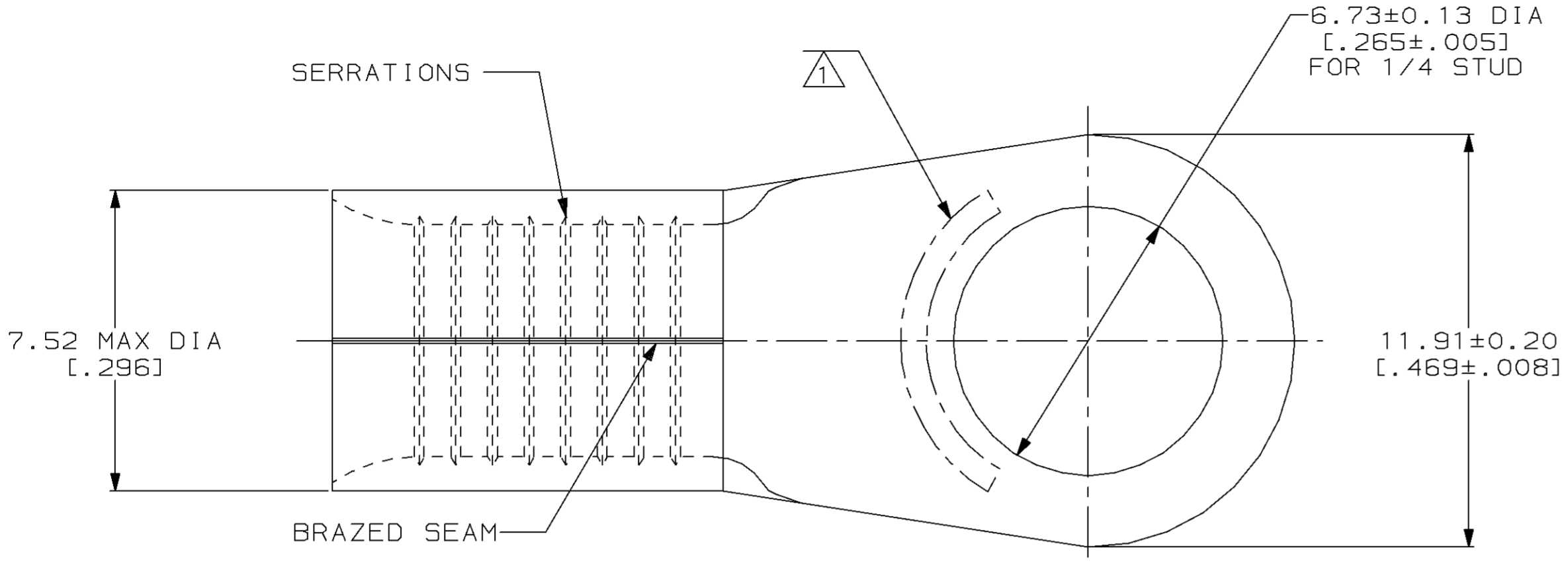


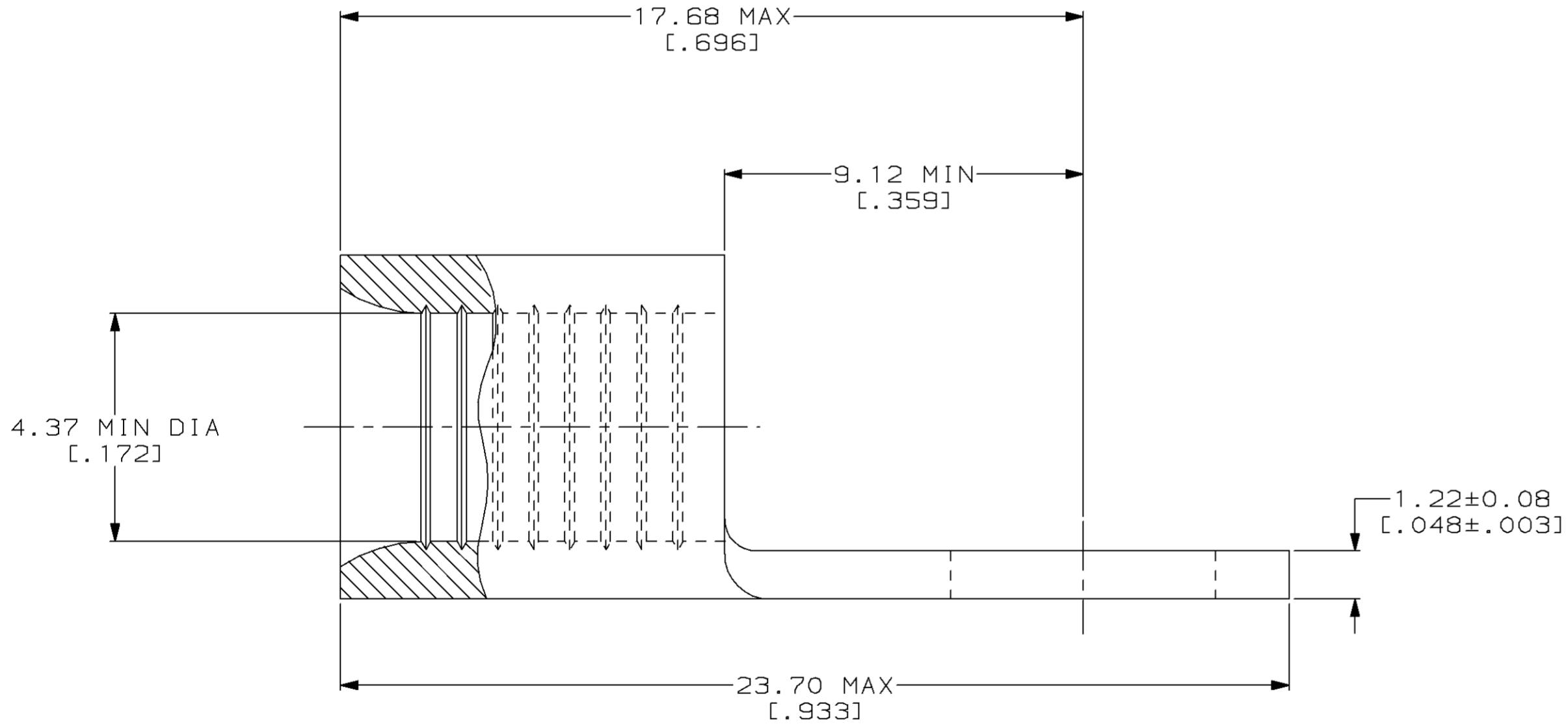
LOC		DIST		P		F		ZONE		LTR		REVISIONS		DATE	APPD
G		14								C		REV & REDRAWN PER 0720-0061-93		4-19-93	APPD

**METRIC**  
 DIMENSIONS LISTED IN mm [ INCHES ]



<b>AMP</b> WIRE RANGE	<b>UL</b> Listed
8 AWG SOLID OR STRANDED	NOT APPLICABLE
<b>SR</b> LR7189 Certified	MILITARY P/N AND CLASS
NOT APPLICABLE	NOT APPLICABLE

1 STAMP AMP 8\* APPROX AS SHOWN



323166

PART NO

**AMP INCORPORATED**  
 CUSTOMER SERVICE SYSTEMS

MAX RECOMMENDED OPERATING TEMPERATURE:  
 343°C MAX

DO NOT SCALE PRINT.  
 UNLESS SPECIFIED  
 DIMENSIONS IN mm [INCHES]  
 TOLERANCES ON:  
 2 PLC DEC ± -  
 3 PLC DEC ± -  
 ANGLES ± -

DR 4-19-93  
 TA BRINKMAN  
 CHK 4-19-93  
 DA PATTERSON  
 APPD 4-19-93  
 DE MILLER  
 APPD 4-19-93  
 JL MECKLEY

**AMP** AMP Incorporated  
 Harrisburg, PA 17105-3608

FOR ADDITIONAL  
 PRODUCT INFORMATION OR  
 COPIES OF DRAWINGS  
 AND TECHNICAL DOCUMENTS

PRODUCT INFORMATION CENTER  
 1-800-522-6752

VOLTAGE RATING:  
 NOT APPLICABLE

MATERIAL  
 COPPER PER  
 ASTM B-152  
 ANNEALED

PRODUCT SPEC  
 -

NAME  
 TERMINAL, RING TONGUE,  
 HEAT RESISTANT,  
 STRATO-THERM™

FOR APPLICATION  
 TOOLING INFORMATION

TOOLING ASSISTANCE CENTER  
 1-800-722-1111

WIRE CROSS SECTIONAL AREA RANGE:  
 6.64-10.5MM<sup>2</sup> [13,100-20,800] CIR MILS  
 SOLID OR STRANDED

FINISH  
 NICKEL PLATE  
 0.00762[0.000300] MIN  
 THK PER QQ-N-290

APPLICATION SPEC  
 -

SIZE  
 CAGE CODE  
 DRAWING NO  
 00779 C=323166

FOR ORDER ENTRY

1-800-526-5142

THIS DRAWING IS A CONTROLLED DOCUMENT FOR  
 AMP INCORPORATED. IT IS SUBJECT TO CHANGE  
 AND THE CONTROLLING ENGINEERING ORGANIZATION  
 SHOULD BE CONTACTED FOR THE LATEST REVISION.

WEIGHT  
 -

SCALE  
 8:1

SHEET  
 1 OF 1